

Crane Erector Borers

General Description

All Ozzy Crane Borers have been designed and manufactured in Australia to comply with and in most cases exceed Australian standards AS1418.1, AS1418.5, AS2550.1 and relevant statutory regulations as an attachment to fit any commercially available 6 x 4, 6 x 6 or 8 x 8 diesel cab chassis truck of your preferred choice for use mostly within the electricity industry for the installation and maintenance of power poles as well as the associated day to day equipment lifting.

The unit can be supplied with the turret either rear mounted or forward mounted (which, with a stepped rear deck enables a pole bolster to be used for the carriage of poles in conjunction with a pole trailer).

Drawing on over thirty years of experience in the industry and over 300 units in service the machines have gained a solid reputation for providing customers with High quality, Safe, Simple low maintenance operating cost and ultra reliable service throughout the industry.

Understanding that many machines are used in very remote locations the units have continuously proven to stand the test of time and handle the most arduous of tasks in the harshest of Australian conditions

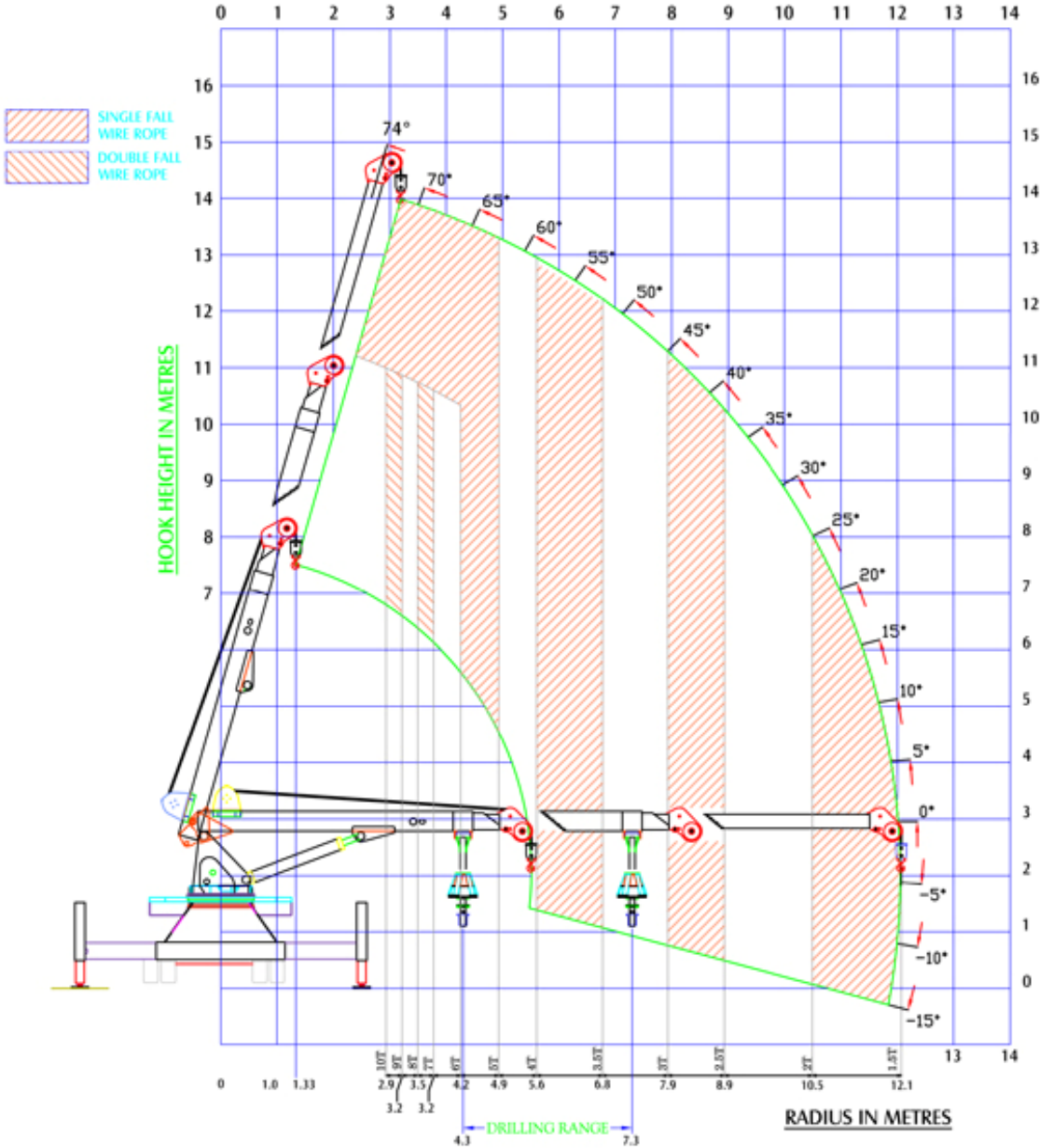
Ozzy Crane Borer's design enables us to offer you the most comprehensive range of models and build configurations to suit your individual requirements and ensure that you gain the maximum return on your investment with excellent resale values.

All units are manufactured in house by a highly experienced and dedicated team in a modern purpose built factory located in Moree N.S.W

[Contact us](#) for a comprehensive brochure.

Crane Erector Borers

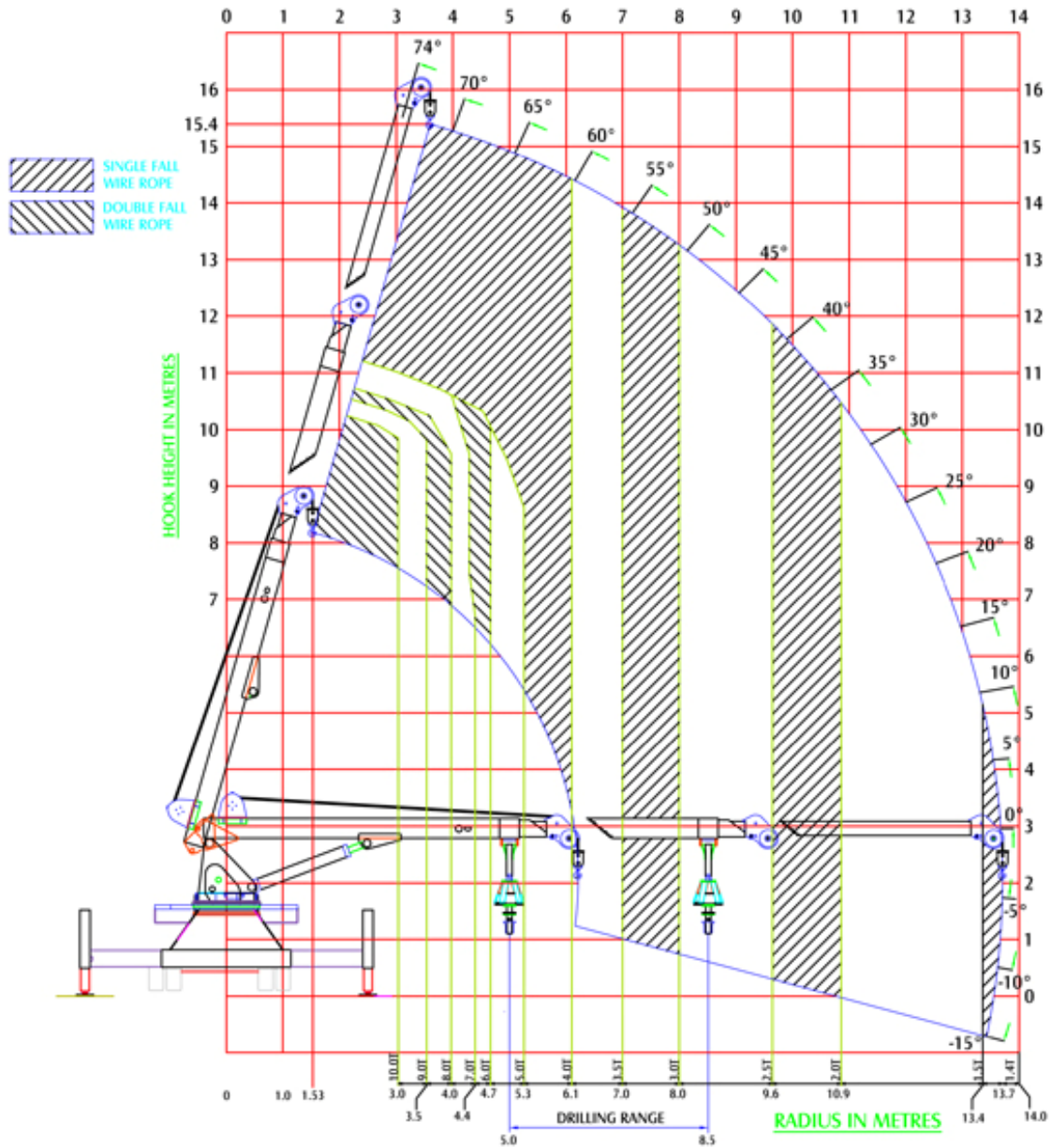
Model 5/10-14m Ozzy Crane Borer Load Chart



NOTE :
 THIS RANGE CHART ONLY PROVIDES APPROXIMATE INFORMATION REGARDING LOADS
 REFER TO THE TABULAR LOAD CHART TO DETERMINE THE CORRECT LOAD
 FOR EACH GIVEN BOOM LENGTH AND ANGLE.

Crane Erector Borers

Model 5/10-15m Ozzy Crane Borer Load Chart



NOTE :
 THIS RANGE CHART ONLY PROVIDES APPROXIMATE INFORMATION REGARDING LOADS
 REFER TO THE TABULAR LOAD CHART TO DETERMINE THE CORRECT LOAD
 FOR EACH GIVEN BOOM LENGTH AND ANGLE.

Crane Erector Borers

Models Available

Non-Insulated Models

- 5/10 Capacity -12.6 (Hook height) Rear mounted or forward mount configuration
- 5/10 Capacity -14.0 (Hook Height) Rear mounted or forward mount configuration
- 5/10 Capacity -15.4 (Hook Height) Rear mounted configuration

Insulated Models

- 5/10 Capacity -16 (Hook Height) Rear Mount Configuration
- 5/10 Capacity -15 (Hook Height) Forward Mount Configuration

Cab/Chassis Suitability

- All Models: 6 x 4 , 6 x 6 or 8 x 8

Crane Erector Borers

Standard Features

- Non insulated Boom sections
- Deck access steps both sides of unit
- Full width/length mesh deck with tie down points
- Radial Piston Auger drive motor (Staffa)
- In built water tank
- Robway Digital load management system
- Ergonomic operators control station
- Extra heavy duty retractable pole grabs
- Hydraulic power tool outlet and retractable reel
- Hydraulic pilot operated joystick control
- Under body storage on both sides of unit
- Removable operators canopy
- Heavy duty outrigger legs
- Comprehensive operators and parts manuals

[[Enquire](#)]

Crane Erector Borers

General Options

- Insulated Boom & winch rope
- 8x8 build Configurations
- Forward mount configuration inc stopped deck and pole bolster
- Fully enclosed, air conditioned operators cabin
- Radio remote control
- Various Load Management system options
- Hydraulic Pole jack and base
- Custom storage body lockers
- Retractable Water hose reel
- Oil spill kit
- Fire extinguisher
- Screw anchor adaptor and kelly bar
- Hydraulic pole tamper tool
- Jack leg dunnage
- Extensive range of both earth and rock augers
- Rear mounted 15,000 pd Recovery Winch
- Choice of Colour Scheme

Many more options are available upon request to suit your individual requirements.

Crane Erector Borers

Technical Specifications

Models: 5/10-15 & 5/10-14

Type	Vehicle mounted		
	Rear or Forward mounted turret		
Standards	AS1418.1, AS1418.5 & AS2550.1		
Cab/Chassis	Any commercially available 6 x 4, 6 x 6 or 8 x 8 Diesel cab Chassis		
Lifting Capacity	Single fall rope	5 Tonne max capacity	
	Double fall rope	10 Tonne max capacity	
Maximum Hook Height		Model:5/10-15	Model:5/10-14
	Single fall rope	15.5 metres	14.0 metres
	Double fall rope	10.6 metres	10 metres
	Boom horizontal	14 metre = 12 METRES	
		15 metre = 13.8 METRES	
Max outreach Capacity	Maximum outreach	1.5 Tonne (Model 5/10-15)	
	Maximum outreach	1.5 Tonne (Model 5/10-14)	
Available Boom Lengths	Rear mount model	12 mtrs, 14 mtrs & 15 mtrs	
	Forward mount model	12 mtrs & 14 mtrs	

Crane Erector Borers

Boom Section Construction	High strength square section tube and fabrication Jib point.		
Boom Elevation	Above horizontal	74°	
	Below horizontal	-15°	
Slew	360° Continuous		
Winch	Make/Model	Ozzy Crane	
	Max line pull	5 Tonne (Single Fall)	
	Max Line pull	10 Tonne (D/Fall)	
	Speed	Infinitely variable single speed	
Winch Rope	16mm Diameter Non Rotating		
Pole Grabs	Standard		
Borer			
Motor Type	Direct drive radial piston		
Motor Make	Staffa		
Drilling Torque	Max. Torque	15,000 to 20,000 Nm	
Speed	Infinitely variable	0-53 RPM	
Drilling Radius		Model 5/10-15	Model 5/10-14
	Maximum	8.5 metres	7.3 metres
	Minimum	5.0 metres	4.3 metres
Hole Depth (Without extensions)	Max	3.2 metres	3.2 metres
Stabilisers	4 x Hydraulically operated heavy duty out and down type capable of levelling the unit on 10° slopes self		

Crane Erector Borers

	levelling foot plates		
Hydraulic System	Variable displacement pump		
	Emergency power supply		
	Low pressure hydraulic pilot operated joysticks		
	High pressure and return line filters		
Load Management	Digital load management fitted with optional slew zone Sectionalisation		
Travelling/Height	4100mm (Typical)		
Overall Width	2500mm		
Overall Length	9300mm (Typical)		